



# ***PARTS MANUAL***



## **Models**

<b>Mfg. No.</b>	<b>Description</b>
881224	MXUA19675, 19" 6.75GT Walk Behind Mower (2011)
881225	MXUA21675, 21" 6.75GT Walk Behind Mower (2011)

**Manual Part No.** 1751714  
Revision C  
Rev. Date: 1/25/2012

Not for  
Reproduction

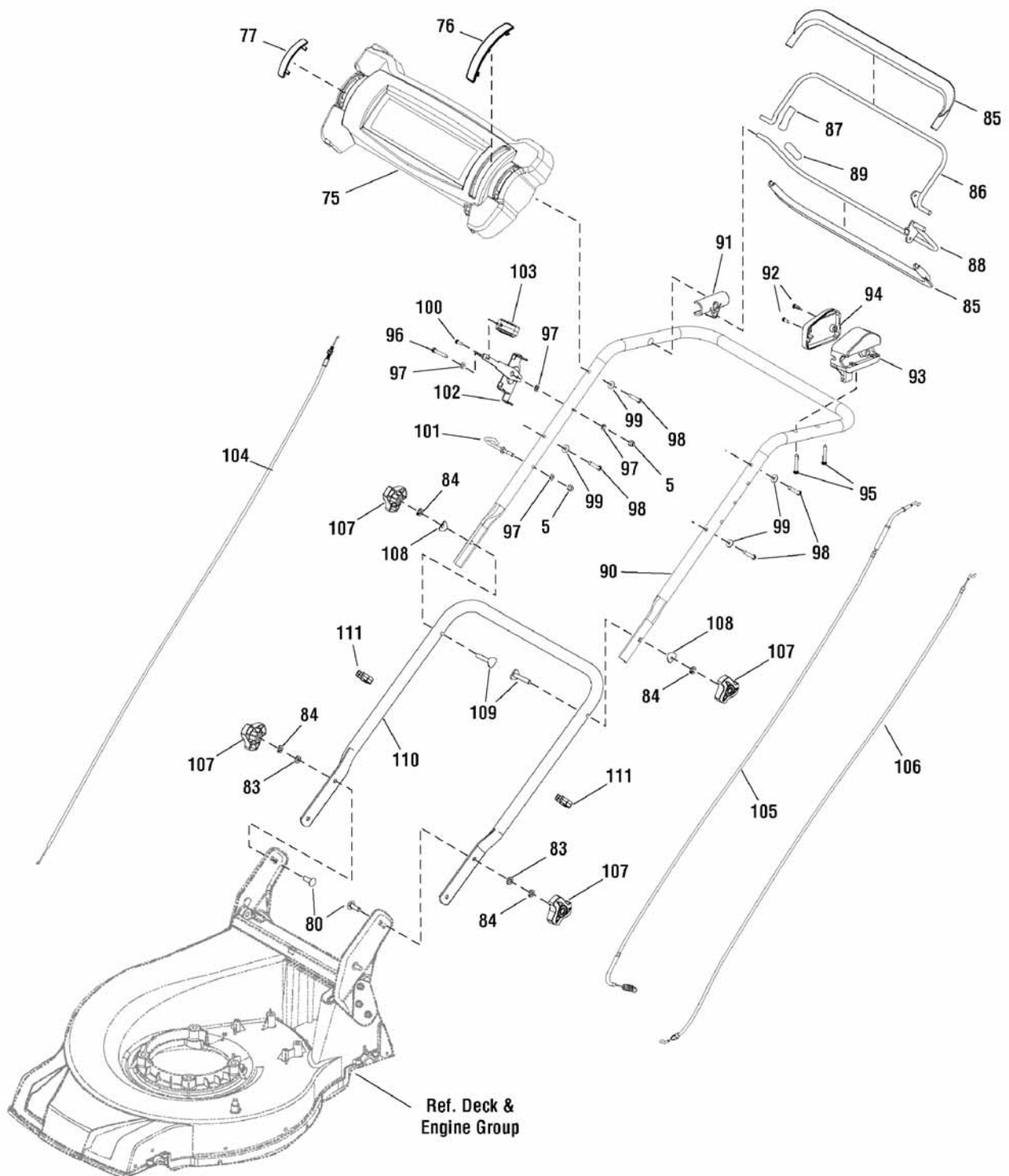
<b>PRODUCT COMPONENTS</b>	<b>PAGES</b>
Handle Assembly .....	4
Deck & Engine Group .....	6
Decal Group .....	10
Drive Group .....	12
<b>Torque Specification Chart .....</b>	<b>Inside Back Cover</b>

Not for  
Reproduction

## Handle Assembly

NOTE: Unless noted otherwise, use the standard hardware torque specification chart.

881224ha



The above parts group applies to the following Mfg. Nos.:

881224 - MXUA19675

881225 - MXUA21675

## Handle Assembly

REF NO	PART NO.	QTY.	DESCRIPTION
5	701183YP	2	NUT, Hex, Nylon Insert, Torque Type
75	701279YP	1	PANEL, Handle Cover (Used on 19" Decks)
75	701317YP	1	PANEL, Handle Cover (Used on 21" Decks)
76	701280YP	1	INSERT, Throttle Cover
77	701281YP	2	INSERT, Throttle Cover
80	701319YP	2	BOLT, Carriage,
83	701230YP	2	WASHER, Flat, C Class
84	701231YP	4	WASHER, Spring
85	701284YP	2	COVER, Handle (Used on 19" Decks)
85	701321YP	2	COVER, Handle (Used on 21" Decks)
86	701232YP	1	LEVER, Brake (Used on 19" Decks)
86	701322YP	1	LEVER, Brake (Used on 21" Decks)
87	701233YP	1	COVER, Brake Lever
88	701234YP	1	LEVER, Clutch (Used on 19" Decks)
88	701323YP	1	LEVER, Clutch (Used on 21" Decks)
89	701235YP	1	COVER, Clutch Lever
90	701236YP	1	HANDLE, Upper (Used on 19" Decks)
90	701324YP	1	HANDLE, Upper (Used on 21" Decks)
91	701285YP	1	HINGE
92	701237YP	2	SCREW, Pan Head, Cross Recessed Tapping
93	701369YP	1	CABLE BOX, Control Lever
94	701286YP	1	COVER, Cable Box
95	701238YP	2	SCREW, Pan Head, Cross Recessed Tapping
96	701239YP	1	SCREW, Pan Head, Cross Recessed, H-Form
97	701240YP	4	WASHER, Flat, C Class
98	701241YP	4	SCREW, Pan Head, Cross Recessed Tapping
99	701242YP	4	WASHER, A-Form
100	701243YP	1	SCREW, Pan Head, Cross Recessed Tapping
101	701244YP	1	HOOK, Start Rope
102	701325YP	1	FRAME, Throttle
103	701245YP	1	GRIP, Throttle
104	701246YP	1	CABLE, Throttle
105	701288YP	1	CABLE, Clutch
106	701247YP	1	CABLE, Brake (Used on 19" Decks)
106	701289YP	1	CABLE, Brake (Used on 21" Decks)
107	701248YP	4	KNOB, Lock
108	701249YP	2	WASHER, Curved
109	701250YP	2	BOLT, Connecting
110	701251YP	1	HANDLE, Lower (Used on 19" Decks)
110	701327YP	1	HANDLE, Lower (Used on 21" Decks)
111	701290YP	2	CLIP, Cable

### Footnotes

The above parts group applies to the following Mfg. Nos.:

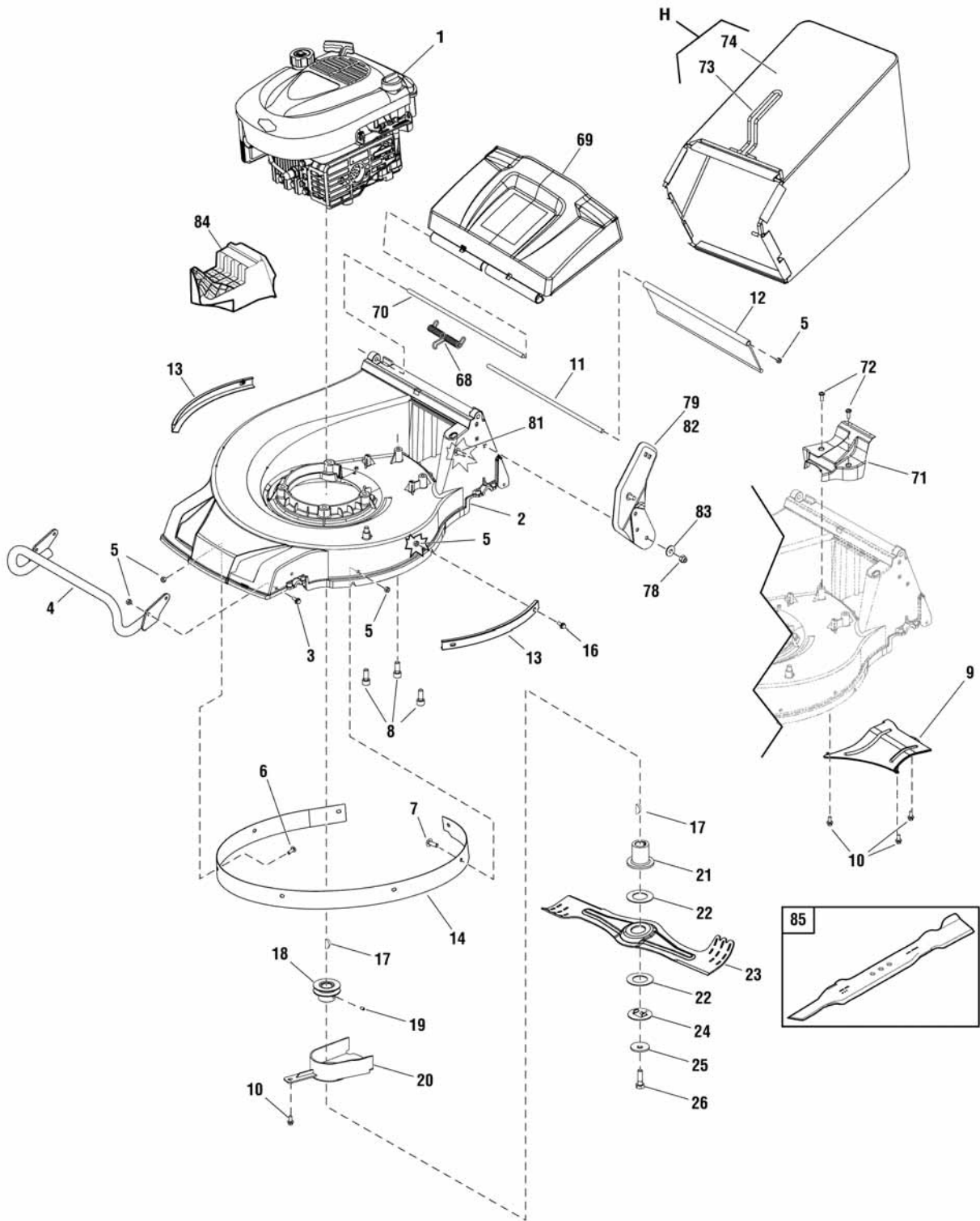
881224 - MXUA19675

881225 - MXUA21675

## Deck & Engine Group

881224dk

NOTE: Unless noted otherwise,  
use the standard hardware torque  
specification chart.



The above parts group applies to the following Mfg. Nos.:

881224 - MXUA19675

881225 - MXUA21675

## Deck & Engine Group

REF NO	PART NO.	QTY.	DESCRIPTION
1	126T02-0315-B1	1	** ENGINE, 6.75 GTP Briggs & Stratton (Engine Model: 126T02-0315-B1)
2	701180YP	1	DECK, 19"
2	701291YP	1	DECK, 21"
3	701181YP	4	BOLT, Hex Flange
4	701182YP	1	BUMPER, 19"
4	701328YP	1	BUMPER, 21"
5	701183YP	14	NUT, Hex, Nylon Insert, Torque Type
6	701184YP	3	SCREW, Truss Head, Cross Recessed
7	701185YP	4	SCREW, Truss Head, Cross Recessed
8	701186YP	4	SCREW, Inner Hexagon, Round Head, Tapping
9	701252YP	1	DEFLECTOR, Lower (Used on 19" Decks)
9	701329YP	1	DEFLECTOR, Lower (Used on 21" Decks)
10	701187YP	5	SCREW, Hex Flange, Tapping
11	701188YP	1	SHAFT, Rear Deflector, 19"
11	701292YP	1	SHAFT, Rear Deflector, 21"
12	701189YP	1	DEFLECTOR, Rear, 19"
12	701293YP	1	DEFLECTOR, Rear, 21"
13	701190YP	2	SHIELD, Outer (Used on 19" Decks)
13	701294YP	2	SHIELD, Outer (Used on 21" Decks)
14	701253YP	1	SHIELD, Inner Ring (Used on 19" Decks)
14	701295YP	1	SHIELD, Inner Ring (Used on 21" Decks)
16	701191YP	4	BOLT, Hex Flange (Used on 19" Decks)
16	701297YP	4	BOLT, Hex Flange (Used on 21" Decks)
17	701192YP	2	KEY, Woodruff
18	701193YP	1	PULLEY, Engine
19	701298YP	1	SCREW, Inner Hexagon Recessed
20	701299YP	1	SHIELD, Lower Belt
21	701255YP	1	ADAPTOR, Blade
22	701256YP	2	DISC, Friction
23	701195YP	1	BLADE, 19"
23	701332YP	1	BLADE, 21"
24	701257YP	1	CLIP
25	701196YP	1	SPRING, Dishing
26	701197YP	1	BOLT, Blade
68	701223YP	1	SPRING, Torsion (Used on 19" Decks)
68	701310YP	1	SPRING, Torsion (Used on 21" Decks)
69	701276YP	1	COVER, Rear (Used on 19" Decks)
69	701311YP	1	COVER, Rear (Used on 21" Decks)
70	701224YP	1	SHAFT, Rear Cover (Used on 19" Decks)
70	701312YP	1	SHAFT, Rear Cover (Used on 21" Decks)

### Footnotes

\*\* For information on replacement parts contact the engine manufacturer.

---

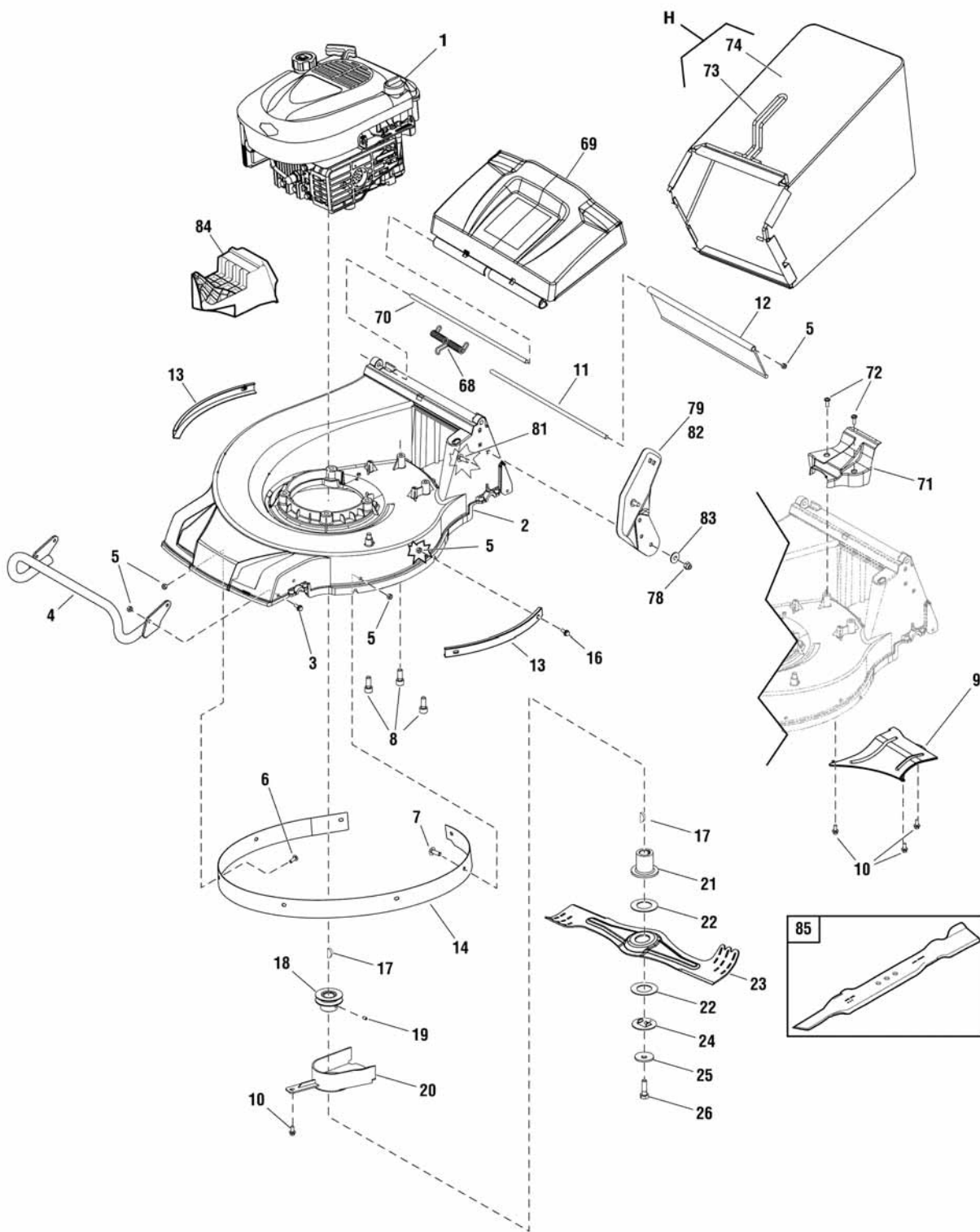
### The above parts group applies to the following Mfg. Nos.:

881224 - MXUA19675  
881225 - MXUA21675

## Deck & Engine Group

881224dk

NOTE: Unless noted otherwise,  
use the standard hardware torque  
specification chart.



The above parts group applies to the following Mfg. Nos.:

881224 - MXUA19675

881225 - MXUA21675



## Deck & Engine Group

REF NO	PART NO.	QTY.	DESCRIPTION
71	701225YP	1	SHIELD, Upper Pulley (Used on 19" Decks)
71	701313YP	1	SHIELD, Upper Pulley (Used on 21" Decks)
72	701226YP	2	SCREW, Inner Hexagon Tapping
H	701227YP	1	GRASS CATCHER ASSEMBLY (Used on 19" Decks) (Includes Ref. Nos. 73 & 74)
H	701314YP	1	GRASS CATCHER ASSEMBLY (Used on 21" Decks) (Includes Ref. Nos. 73 & 74)
73	-----	1	FRAME, Grass Catcher, 19" Deck (Not a serviceable part, order Ref. H)
73	-----	1	FRAME, Grass Catcher, 21" Deck (Not a serviceable part, order Ref. H)
74	-----	1	BAG, Grass Catcher, 19" Deck (Not a serviceable part, order Ref. H)
74	-----	1	BAG, Grass Catcher, 21" Deck (Not a serviceable part, order Ref. H)
78	701228YP	6	NUT, Nylon Insert, Torque Type
79	701282YP	1	BRACKET, Handle, RH
81	701229YP	6	BOLT, Carriage
82	701283YP	1	BRACKET, Handle, LH
83	701230YP	6	WASHER, Flat, C Class
84	702120YP	1	PLUG, Mulch, 19"
84	702122YP	1	PLUG, Mulch, 21"
85	702119YP	1	BLADE, Mulch, 19" (Optional Accessory)
85	702121YP	1	BLADE, Mulch, 21" (Optional Accessory)

Not for  
Reproduction

### Footnotes

\*\* For information on replacement parts contact the engine manufacturer.

---

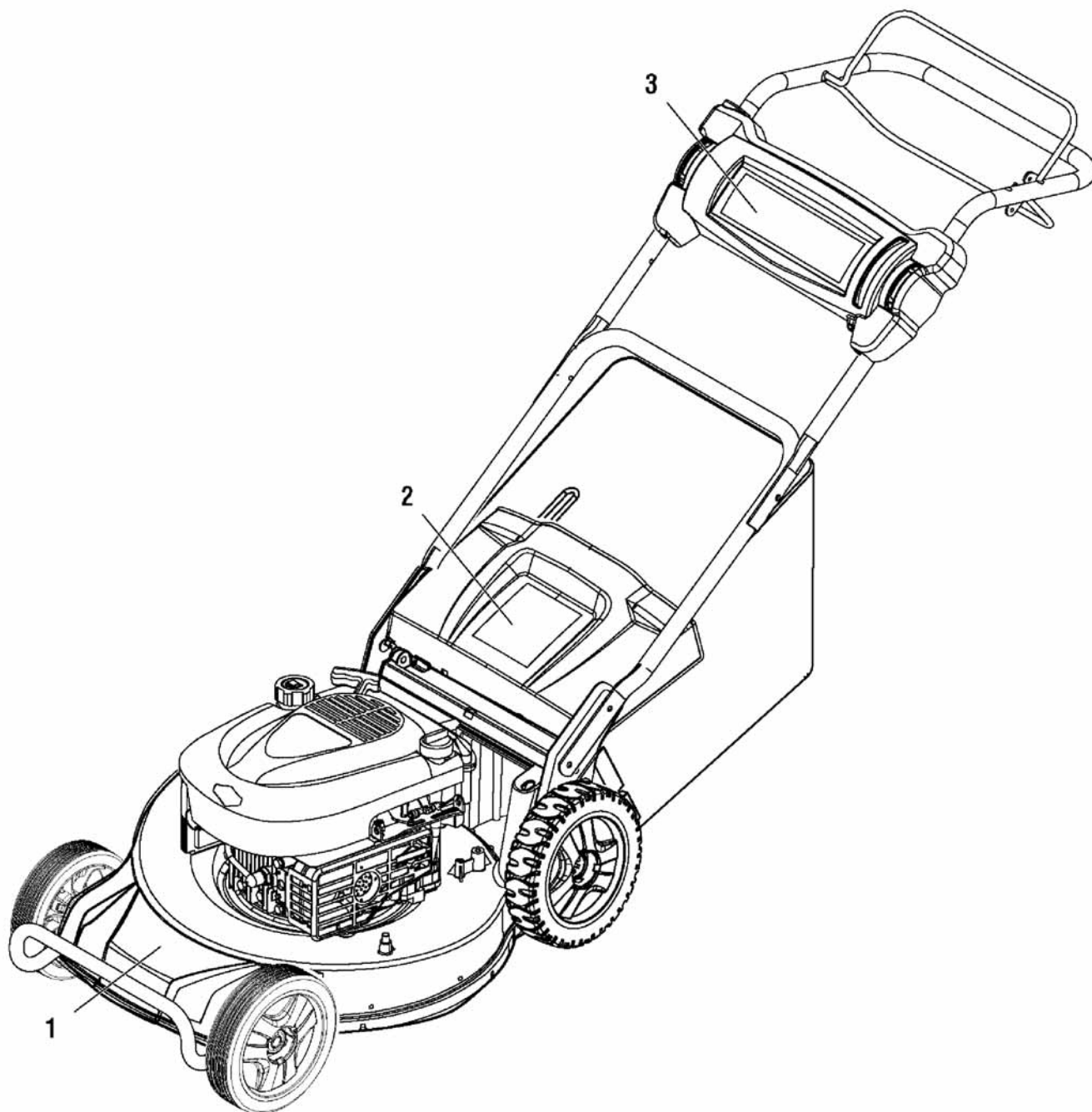
### The above parts group applies to the following Mfg. Nos.:

881224 - MXUA19675  
881225 - MXUA21675

## Decal Group

881224d1

NOTE: Unless noted otherwise,  
use the standard hardware torque  
specification chart.



The above parts group applies to the following Mfg. Nos.:

881224 - MXUA19675

881225 - MXUA21675

## **Decal Group**

---

<b>REF NO</b>	<b>PART NO.</b>	<b>QTY.</b>	<b>DESCRIPTION</b>
1	881260YP	1	DECAL, Logo, Deck
2	881442YP	1	DECAL, Safety
3	881238YP	1	DECAL, Console

---

Not for  
Reproduction

### **Footnotes**

---

**The above parts group applies to the following Mfg. Nos.:**

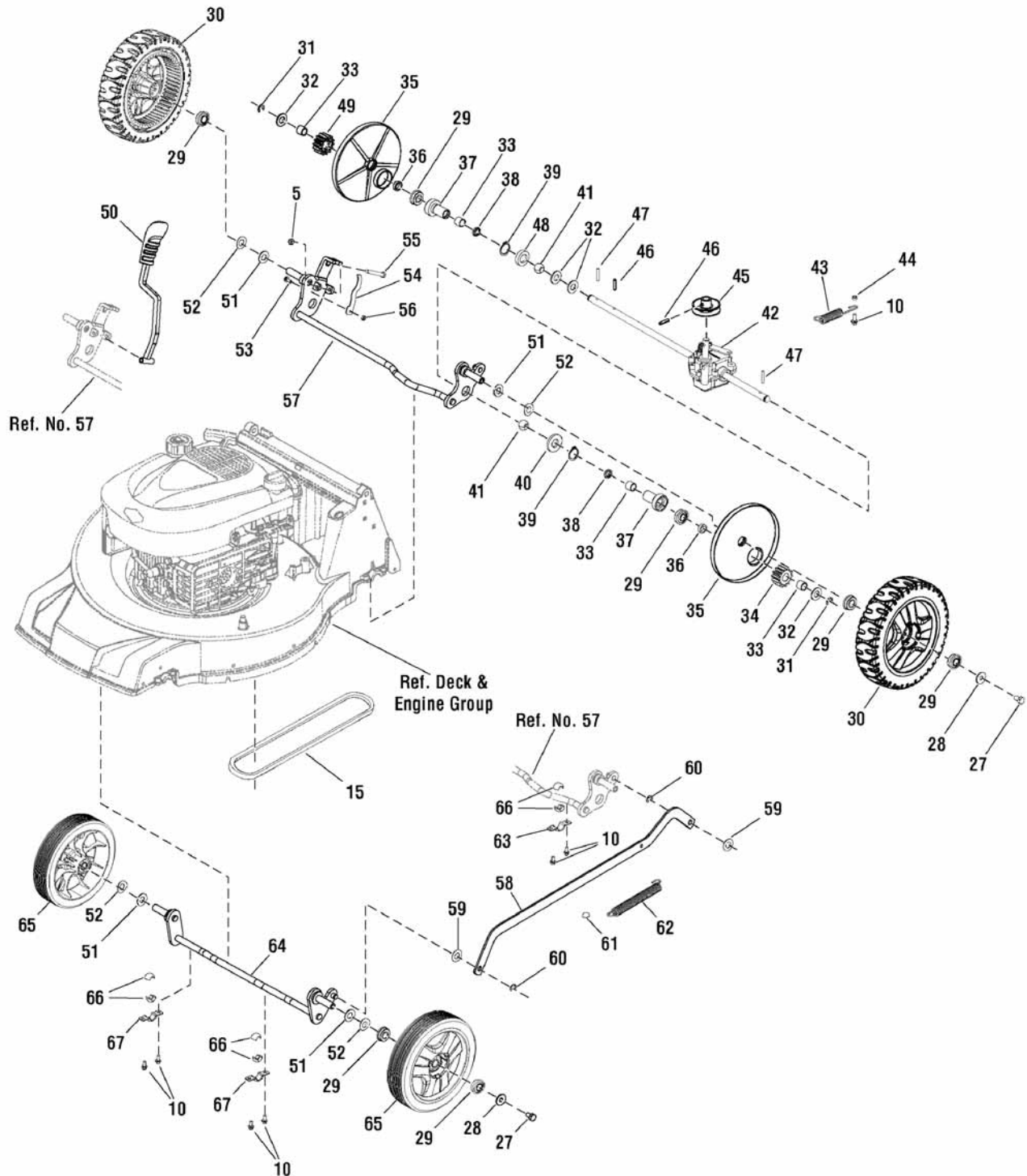
881224 - MXUA19675

881225 - MXUA21675

# Drive Group

881224dr

NOTE: Unless noted otherwise,  
use the standard hardware torque  
specification chart.



The above parts group applies to the following Mfg. Nos.:

881224 - MXUA19675

881225 - MXUA21675

## Drive Group

REF NO	PART NO.	QTY.	DESCRIPTION
5	701183YP	1	NUT, Hex, Nylon Insert, Torque Type
10	701187YP	8	SCREW, Hex Flange, Tapping
15	701254YP	1	V-BELT, Normal, V10 x 783 gates (Used on 19" Decks)
15	701296YP	1	V-BELT, Common (Used on 21" Decks)
27	701300YP	4	BOLT
28	701198YP	4	COVER, Wheel
29	701199YP	10	BEARING
30	701200YP	2	WHEEL, Rear, Self-Propelled, 8" (Used on 19" Decks)
30	701301YP	2	WHEEL, Rear, Self-Propelled, 9" (Used on 21" Decks)
31	701261YP	2	CHECK RING
32	701201YP	4	WASHER, Anti-Friction
33	701202YP	4	OIL BEARING B
34	701203YP	1	PINION, Left
35	701205YP	2	SHIELD, Dust, Rear (Used on 19" Decks)
35	701302YP	2	SHIELD, Dust, Rear (Used on 21" Decks)
36	701204YP	2	SPACER, Main Axle
37	701262YP	2	BEARING SHEATH
38	701206YP	2	RING, Dustproof
39	701263YP	2	RING, Elastic, For A-form Axle
40	701264YP	1	WASHER, Left Bearing Bracket
41	701207YP	2	BALL BEARING, Nylon
42	701265YP	1	TRANSMISSION, Single Speed (Used on 19" Decks)
42	701303YP	1	TRANSMISSION, Single Speed (Used on 21" Decks)
43	701208YP	1	SPRING, Gearbox
44	701266YP	1	RING
45	701209YP	1	PULLEY, Gearbox
46	701267YP	2	PIN, Elastic Cylindrical
47	701210YP	2	PIN, Sliding
48	701211YP	1	SPACER, Transmission
49	701212YP	1	PINION, Right
50	701213YP	1	LEVER, Height Adjust
51	701214YP	4	WASHER, Wheel Axle
52	701269YP	4	WASHER, Spring
53	701215YP	1	BOLT, Hexangular, Full Thread (Used on 19" Decks)
53	701304YP	1	BOLT, Hexangular, Full Thread (Used on 21" Decks)
54	701216YP	1	SPRING, Armature
55	701217YP	1	BOLT, Hexangular
56	701218YP	1	NUT, Hex, Nylon Insert, Torque Type
57	701219YP	1	AXLE, Rear (Used on 19" Decks)
57	701305YP	1	AXLE, Rear (Used on 21" Decks)
58	701268YP	1	CONNECTING ROD (Used on 19" Decks)
58	701306YP	1	CONNECTING ROD (Used on 21" Decks)

### Footnotes

The above parts group applies to the following Mfg. Nos.:

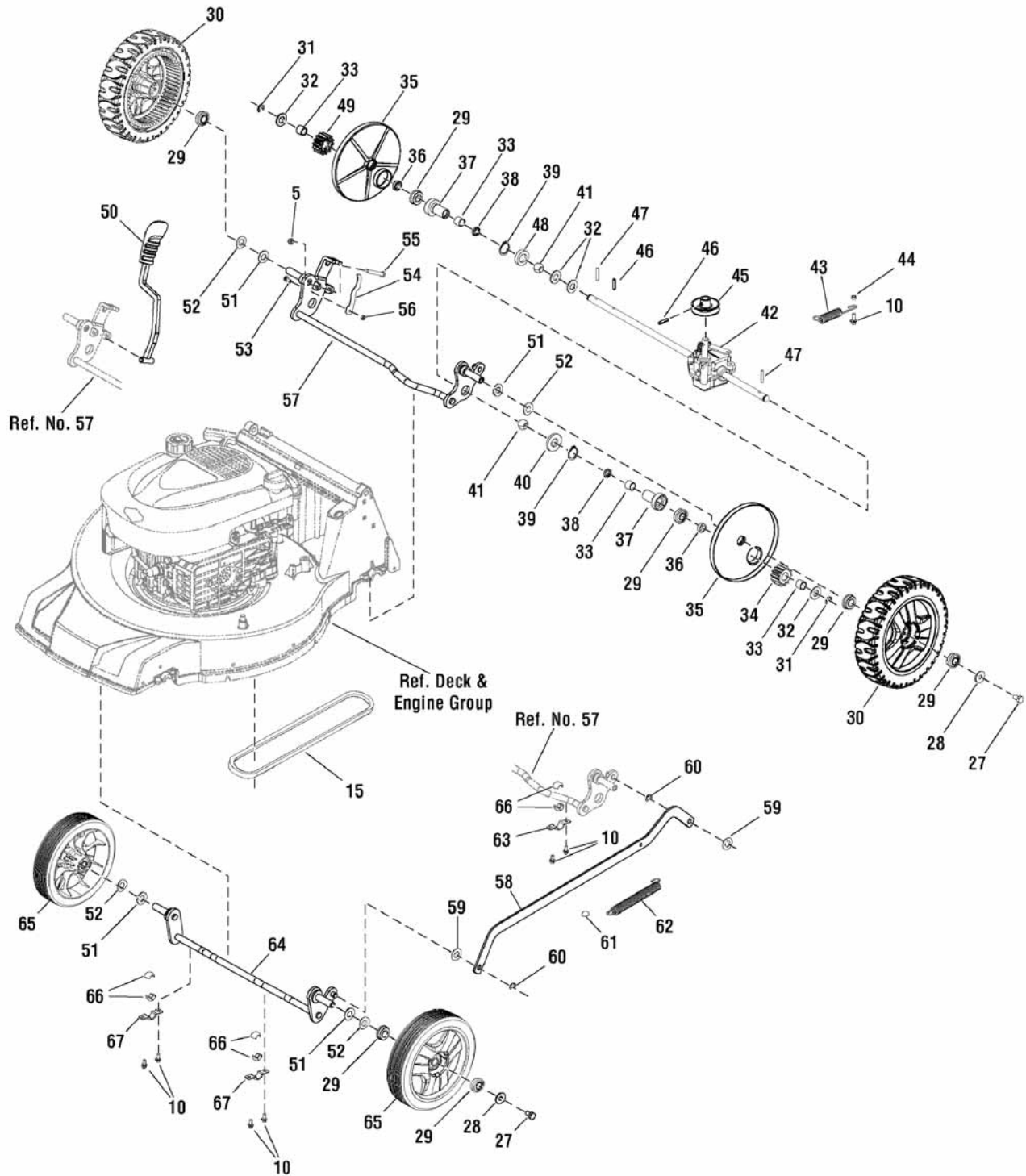
881224 - MXUA19675

881225 - MXUA21675

# Drive Group

881224dr

NOTE: Unless noted otherwise,  
use the standard hardware torque  
specification chart.



The above parts group applies to the following Mfg. Nos.:

881224 - MXUA19675

881225 - MXUA21675

## Drive Group

REF NO	PART NO.	QTY.	DESCRIPTION
59	701220YP	2	WASHER, Nylon
60	701270YP	2	CHECK RING
61	701271YP	1	CHECK CAP
62	701272YP	1	SPRING, Connecting Rod (Used on 19" Decks)
62	701307YP	1	SPRING, Connecting Rod (Used on 21" Decks)
63	701273YP	2	BRACKET, Upper Ball Bearing
64	701221YP	1	AXLE, Front, 19"
64	701308YP	1	AXLE, Front, 21"
65	701309YP	2	WHEEL, Front, 8"
66	701222YP	4	BALL BEARING
67	701275YP	2	BRACKET, Front Ball Bearing

Not for  
Reproduction

### Footnotes

---

**The above parts group applies to the following Mfg. Nos.:**

881224 - MXUA19675

881225 - MXUA21675

Not for  
Reproduction



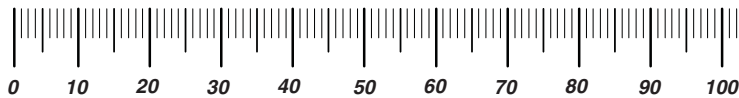
Not for  
Reproduction

Not for  
Reproduction

# Hardware Identification & Torque Specifications

Torque Specification Chart								
FOR STANDARD METRIC MACHINE HARDWARE (Tolerance ± 20%)								
Property Class	5.6		8.8		10.9		12.9	
	Class 5.6		Class 8.8		Class 10.9		Class 12.9	
Size Of Hardware	in/lbs		in/lbs		in/lbs		in/lbs	
	ft/lbs	Nm.	ft/lbs	Nm.	ft/lbs	Nm.	ft/lbs	Nm.
M3	5.88	.56	13.44	1.28	19.2	1.80	22.92	2.15
M4	13.44	1.28	30.72	2.90	43.44	4.10	52.56	4.95
M5	26.4	2.50	60.96	5.75	5.97	8.10	7.15	9.7
M6	44.64	4.3	7.3	9.9	10.3	14	12.1	16.5
M7	5.2	7.1	12.1	16.5	16.9	23	19.9	27
M8	7.7	10.5	17.7	24	25	34	29	40
M10	15	21	35	48	50	67	59	81
M12	26	36	61	83	86.2	117	103	140
M14	42	58	101	132	136	185	162	220
M16	64	88	147	200	210	285	250	340
M18	89	121	202	275	287	390	346	470
M20	126	171	290	390	405	550	486	660
M22	169	230	390	530	559	745	656	890
M24	217	295	497	375	708	960	840	1140
M27	320	435	733	995	1032	1400	1239	1680
M30	435	590	995	1350	1401	1900	1681	2280
M33	590	800	1349	1830	1902	2580	2278	3090
M36	759	1030	1740	2360	2441	3310	2935	3980
M39	988	1340	2249	3050	3163	4290	3798	5150

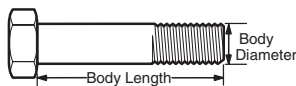
The guides and ruler furnished below are designed to help you select the appropriate hardware.



Nut, M8

Thread Diameter (mm)  
Inside Diameter (in)  
Threads per inch

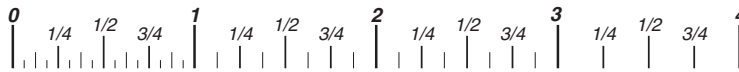
Nut, 1/2-16



Screw, M8- 1.25 x 25

Thread Diameter (mm)  
Body Diameter  
Distance between threads (mm)  
Threads per inch  
Body Length (mm)  
Body Length (in)

Screw, 1/2- 16 x 2



## Standard Hardware Sizing

When a washer or nut is identified as 1/2" (M8), this is the *Nominal size*, meaning the *inside diameter* is 1/2 inch (8mm metric thread diameter); if a second number is present it represents the *threads per inch* (distance between threads).

When bolt or capscrew is identified as 1/2 - 16 x 2" (M8 - 1.25 x 50 ), this means the *Nominal size*, or body diameter is 1/2 inch (8mm metric thread diameter), the second number, 16, represents the *threads per inch*, (1.25 thread diameter). The final number is the body length of the bolt or screw, 2 inches (50mm).

Torque Specification Chart						
FOR STANDARD MACHINE HARDWARE (Tolerance ± 20%)						
Hardware Grade	No Marks		SAE Grade 5		SAE Grade 8	
	SAE Grade 2		SAE Grade 5		SAE Grade 8	
Size Of Hardware	in/lbs		in/lbs		in/lbs	
	ft/lbs	Nm.	ft/lbs	Nm.	ft/lbs	Nm.
8-32	19	2.1	30	3.4	41	4.6
8-36	20	2.3	31	3.5	43	4.9
10-24	27	3.1	43	4.9	60	6.8
10-32	31	3.5	49	5.5	68	7.7
1/4-20	66	7.6	8	10.9	12	16.3
1/4-28	76	8.6	10	13.6	14	19.0
5/16-18	11	15.0	17	23.1	25	34.0
5/16-24	12	16.3	19	25.8	29	34.0
3/8-16	20	27.2	30	40.8	45	61.2
3/8-24	23	31.3	35	47.6	50	68.0
7/16-14	30	40.8	50	68.0	70	95.2
7/16-20	35	47.6	55	74.8	80	108.8
1/2-13	50	68.0	75	102.0	110	149.6
1/2-20	55	74.8	90	122.4	120	163.2
9/16-12	65	88.4	110	149.6	150	204.0
9/16-18	75	102.0	120	163.2	170	231.2
5/8-11	90	122.4	150	204.0	220	299.2
5/8-18	100	136	180	244.8	240	326.4
3/4-10	160	217.6	260	353.6	386	525.0
3/4-16	180	244.8	300	408.0	420	571.2
7/8-9	140	190.4	400	544.0	600	816.0
7/8-14	155	210.8	440	598.4	660	897.6
1-8	220	299.2	580	788.8	900	1,244.0
1-12	240	326.4	640	870.4	1,000	1,360.0

## NOTES

- These torque values are to be used for all hardware excluding: locknuts, self-tapping screws, thread forming screws, sheet metal screws and socket head setscrews.
- Recommended seating torque values for locknuts:
  - for prevailing torque locknuts - use 65% of grade 5 torques.
  - for flange whizlock nuts and screws - use 135% of grade 5 torques.
- Unless otherwise noted on assembly drawings, all torque values must meet this specification.

## Common Hardware Types

Hex Head Capscrew



Washer



Lockwasher

Carriage Bolt



Hex Nut

## Wrench & Fastener Size Guide

1/4" Bolt or Nut Wrench—7/16"	5/16" Bolt or Nut Wrench—1/2"	3/8" Bolt or Nut Wrench—9/16"	7/16" Bolt or Nut Wrench (Bolt)—5/8" Wrench (Nut)—11/16"	1/2" Bolt or Nut Wrench—3/4"
M6 Bolt or Nut Wrench—10mm	M8 Bolt or Nut Wrench—13mm	M10 Bolt or Nut Wrench—17mm	M12 Bolt or Nut Wrench—19mm	M14 Bolt or Nut Wrench—22mm

Not for  
Reproduction

**IT IS THE POLICY OF BRIGGS & STRATTON CORP. TO IMPROVE ITS PRODUCTS  
WHENEVER IT IS POSSIBLE AND PRACTICAL TO DO SO. WE RESERVE THE RIGHT TO  
MAKE CHANGES OR ADD IMPROVEMENTS AT ANY TIME WITHOUT INCURRING ANY  
OBLIGATION TO MAKE SUCH CHANGES ON PRODUCTS.**

**Briggs & Stratton Power Products Group**

---

12301 W. Wirth Street  
Wauwatosa, WI, 53222 USA

[www.murray.com](http://www.murray.com)

© Copyright 2012 by Briggs & Stratton Corporation  
Milwaukee, WI, USA. All rights reserved